



ESTRA 5 - white matt, NT (on a tunnel) sliding system

SLIDING SYSTEM

NS (on a wall), NT (on a tunnel)
interior doors

DRE WALL-MOUNTED SLIDING SYSTEM

It is designed for single or double leaf interior doors in a sliding version. It can be used for doors in our offer, in the following finishes: DRE-Cell, 3D foil, CPL laminates, as well as painted doors, except for the following collections: Enter, Enter Akustik, Solid, Solid RC2, Forca B, fire resistant doors, glass doors and doors with variable heights.

In our sale offer there are available two different types of sliding system:

NS - system mounted directly on the wall
NT - sliding system mounted together with adjustable tunnel

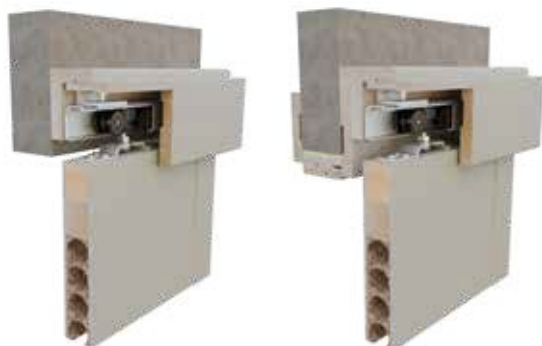
There are two options of NT sliding system:

- mounted together with adjustable tunnel with 63 mm architrave
- mounted together with adjustable tunnel with 80 mm architrave

The NS sliding system includes: a guide (SN 150, 180, 200) with fittings, a spacer strip, a cover and a fender beam (the beam is only for single-leaf doors, for doors with a lock there

NS system - mounted directly on the wall

NT system - installed using an adjustable tunnel



is a milling for a catch in the beam).

In the system mounted with adjustable tunnel, NT, set contains 2 additional 16 mm spacing boards with cross-sections adapted to the width of architraves (63 mm or 80 mm). There are differences in cross-sections of NS and NT masking element.

To complete entire set of sliding doors it is necessary to purchase sliding leaf unit in following dimensions:

Single leaf door: „60“, „70“, „80“, „90“, „100“

Double leaf door: „2x60“, „2x70“, „2x80“, „2x90“, „2x100“

Door leaf might be equipped with sockets for lock and/or handle - those accessories must be purchased separately.

In the system mounted with adjustable tunnel NT, it is necessary to purchase adjustable tunnel separately.

CPL 2nd group laminate applies to the natural halifax oak laminate with horizontal graining.

ACCESSORIES

- Square handle 1 pc.
- Rectangular handle 1 pc.
- Hook lock with key, WC, with two square handles
- hook lock with key, WC, for cylinder lock, with two rectangular handles
- One set of door handle for single leaf door consist of 2 pcs.
- 20/20 cylinder insert

NOTE: The masking strip and guide for double systems are obtained by connecting two elements from a single system.

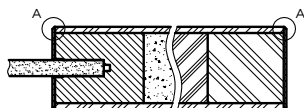


TECHNICAL INFORMATIONS

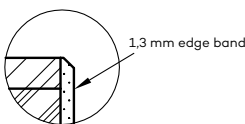
TECHNICAL INFORMATION - VETRO D1

NOTE: In white matt color the door leaves are also available in non-rebated door leaf.

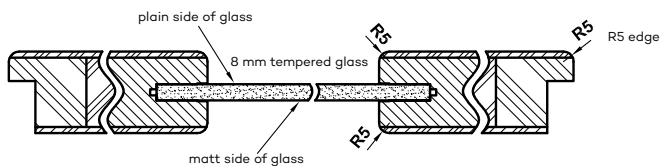
cross-section of stile in non-rebated door leaf



A - milled edges



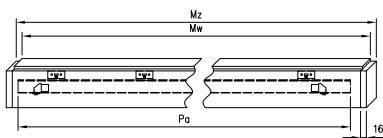
Horizontal cross-section of VETRO D1



VETRO collection glass panes have obverse and reverse sides (important in juxtaposition of doors opening inversely). Presented horizontal cross-sections show the arrangement of glass pane in the obverse version. When choosing a reverse version, glass pane is rotated by 180° around the vertical axis.

WALL-MOUNTED SLIDING SYSTEM

masking strip with guide bar



Single sliding system

Dimension	Masking strip		Guide bar
	Mz	Mw	Pa
door [mm]			
644, 744	1620	1588	1500
844	1920	1888	1800
944	2120	2088	2000
1044	2160	2128	2000

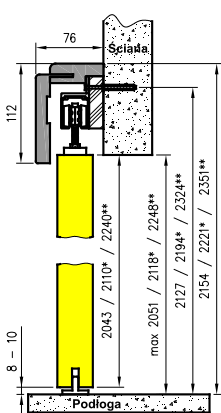
double leaf door sliding system

Dimension	Masking strip		Guide bar
	Mz	Mw	Pa
door [mm]			
2 x 644	2 x 1519	2 x 1503	2 x 1500
2 x 744	2 x 1519	2 x 1503	2 x 1500
2 x 844	2 x 1819	2 x 1803	2 x 1800
2 x 944	2 x 2019	2 x 2003	2 x 2000
2 x 1044	2 x 2063	2 x 2047	2 x 2000

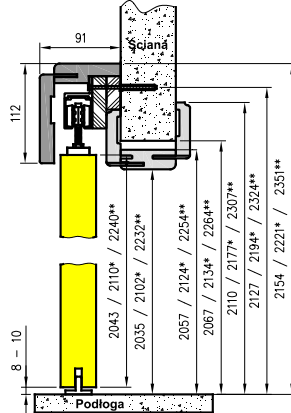
Single sliding system

symbol	"60"	"70"	"80"	"90"	"100"
A	602	702	802	902	1002
C	646	746	846	946	1046
D	664	764	864	964	1064
E	752	852	952	1052	1152
E*	786	886	986	1086	1186
S	644	744	844	944	1044

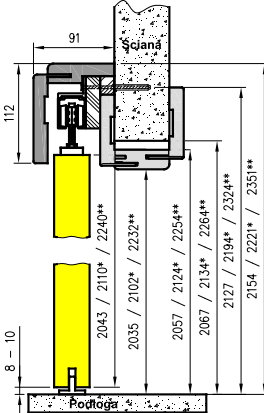
NS - vertical cross-section



NT - vertical cross-section for tunnel with 63 mm architrave

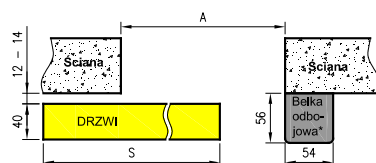


NT - vertical cross-section for tunnel with 80 mm architrave

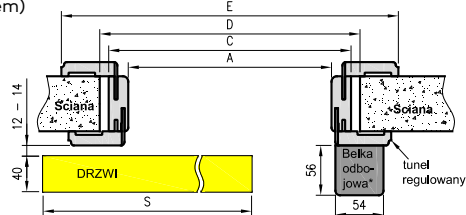


Standard dimensions height 2043, * for the standard height 211X, ** for the standard height 224X

NS - horizontal cross-section (left system)



NT - horizontal cross-section (left system)



double leaf sliding system

symbol	"120"	"140"	"160"	"180"	"200"
A	1200	1400	1600	1800	2000
C	1244	1444	1644	1844	2044
D	1264	1464	1664	1864	2064
E	1350	1550	1750	1950	2150
E*	1384	1584	1784	1984	2184
S**	644	744	844	944	1044

* is not available in double leaf system

E* applies to tunnel with T80 architrave
S** width of single leaf door