

ADJUSTABLE DOOR FRAMES

REBATED WITH ARCHITRAVE T80 OR T63

CONSTRUCTION

The adjustable door frame with T80 or T63 architrave is equipped with architraves with small rounding radii of the cross profile. It is made of high-quality wood-based board. On the exposure side it is completely covered with a wood-like DRE-Cell Decor decorative foil, 3D foil, CPL laminate 0.15 - 0.2 mm thick or painted**. Its design allows for use on walls with a thickness of 60 - 325 mm. Connection at an angle of 90° is available with a T80 architrave in the following colors: **white matt, light grey matt, cashmere matt, warm grey matt, dark olive matt, dark blue matt, sage oak, black matt 2, white acrylic painted UV, white pine, sand oak, vintage oak, Polish oak 3D.**

**NOTE: To ensure the highest quality of painted door frames, before painting process they are coated with special material which constitutes solid base.

APPLICATION

Adjustable door frame can be applied for:

- interior door leaves - rebated and for glass door leaves (ORC)
- ENTER entrance door (includes 3 hinges ø 13.5 mm, additional catcher - extra charge)

SET CONTAINS

Main beam (one horizontal and two vertical elements together with masking elements), door seal, set of hinges, all necessary components for the installation of door frames in accordance with the supplied instruction. Door frames are packed in cardboard boxes. Door frames used as a set with frame construction doors and door frames with size "90" and wider, should be equipped with three hinges. Door frames for glass door "ORC" are equipped with two hinges ø 15 mm, special latch plate and rubber seal strip.

OPTIONS AVAILABLE WITH EXTRA CHARGE

Price of adjustable door frame for double leaf door: +30%

*** The door frame for the wall O60-O85 has a shallower groove on the side of the movable angle,

during assembly it is necessary to shorten the tongue of the architrave.

- Extra charge for a 90° connection angle in white matt, light grey matt, cashmere matt, warm grey matt, dark olive matt, dark blue matt, sage oak, black matt 2, white acrylic UV varnish, white pine, sand oak, vintage oak, 3D Polish oak -
- Extra charge for reinforcement for self closer applies to door frames with a connection angle of 45° -



OR (adjustable rebated door frame) with T63



OR (adjustable rebated door frame) with T80



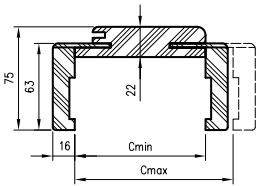
Selected configurations of adjustable rebated door frames are available from stock in the following colours: evoke oak, white matt, alpine white, white acrylic UV varnish.

wall thickness	
Cmin	Cmax
60***	85
80	105
100	125
120	145
140	165
160	185
180	205
200	225
220	245
240	265
260	285
280	305
300	325

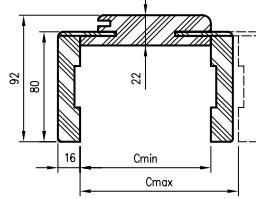
ADJUSTABLE DOOR FRAMES

REBATED WITH ARCHITRAVE T80 OR T63

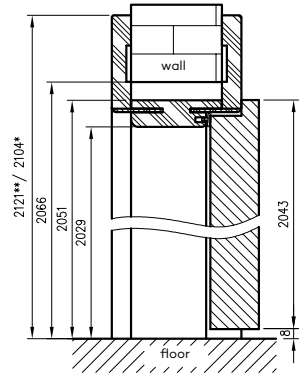
OR/ORC cross-section with T63 architrave



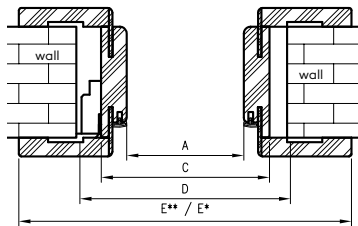
OR/ORC cross-section with T80 architrave



vertical cross-section of rebated door leaf with OR

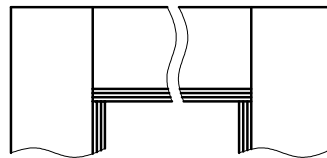


OR/ORC horizontal cross-section



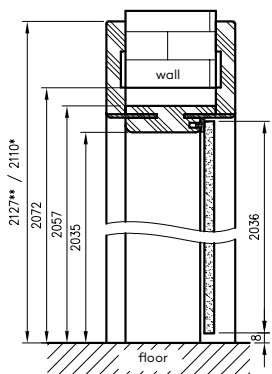
D - required width of wall passage

Adjustable door frame connection at an angle of 90° T80 architrave



90° angle connection available in white matt, light grey matt, cashmere matt, warm grey matt, dark olive matt, dark blue matt, sage oak (structure), matt black 2, acrylic UV painted white, white pine, sand oak, Polish oak 3D, vintage oak.

vertical cross-section of glass doors with ORC (adjustable door frame for glass doors)



required wall passage height 2066 mm (2072 mm for glass doors)

for double-leaf doors

	A	C	D	E**	E*
100d	1035	1079	1115	1219	1185
110d	1135	1179	1215	1319	1285
120	1235	1279	1315	1419	1385
130	1335	1379	1415	1519	1485
140	1435	1479	1515	1619	1585
150	1535	1579	1615	1719	1685
160	1635	1679	1715	1819	1785
170	1735	1779	1815	1919	1885
180	1835	1879	1915	2019	1985
190	1935	1979	2015	2119	2085
200	2035	2079	2115	2219	2185

* dimension refer to door frame with T63 architrave

** dimension refer to door frame with T80 architrave

for single-leaf doors

	A	C	D	E**	E*
60	602	646	680	786	752
7H	672	716	750	856	822
70	702	746	780	886	852
80	802	846	880	986	952
90	902	946	980	1086	1052
90E	906	950	984	1090	1056
100	1002	1046	1080	1186	1152
110	1102	1146	1180	1286	1252

wall thickness	
Cmin	Cmax
60***	85
80	105
100	125
120	145
140	165
160	185
180	205
200	225
220	245
240	265
260	285
280	305
300	325

2nd group of CPL - natural halifax oak laminate. Black ST decor, CPL cashmere laminate, light casella oak, available only with T80 architrave.